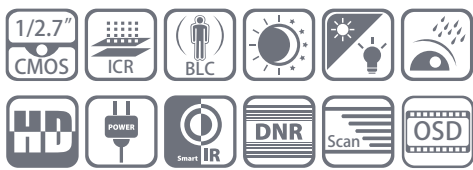


CMHT1823B

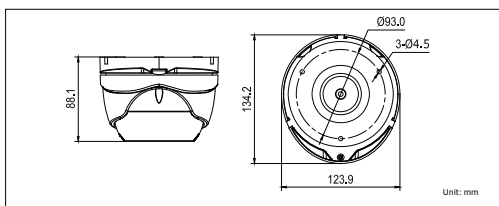
HD1080P HD-TVI Turret Camera



Key features

- HD1080P Video Output
- Adopt HDTV Technology
- True Day/Night
- Smart IR
- 131ft(40m) IR distance
- OSD Menu via UTC technology with Platinum TVI DVR
- IP66 weatherproof

Dimensions



CMHT1823B	
Camera	
Image Sensor	1 / 2.7" Sensor
Signal System	NTSC/PAL(Euro Version)
Effective Pixels	1930(H)*1088(V)
Min. Illumination	0.1 Lux @(F1.2,AGC ON), 0 Lux with IR
Shutter speed	NTSC:1/30 s(PAL:1/25 s) to 1/50,000 s
Lens	2.8-12mm
	Angle of View: 102° - 35°
Day & Night	ICR
Synchronization	Internal synchronization
Video Frame Rate	NTSC:1080p@30fps/PAL:1080p@25fps
HD Video Output	1 Analog HD output
S / N Ratio	More than 52dB
Menu	
Camera ID	On/off (0-255)
AGC	Support
D/N Mode	Color/BW/Auto/EXT
White Balance	Auto/User/Push/8000K/6000K/4200K/3200K/HOLD
Privacy Mask	On/Off, maximum 2 zones
Motion Detection	On/Off
BLC	Support
Anti-flicker	On/off
Language	English, Chinese
Function	Mirror
General	
Working Temperature /Humidity	-40 ° F - 140 ° F (-40 ° C - 60 ° C) Humidity 90% or less (non-condensing)
Power Supply	12V DC
Power Consumption	Max. 4W
Weather Proof Ratings	IP66
IR Range	Up to 131ft(40m)
Dimensions	5.3" × 4.9" × 3.5" (134.2×123.9× 88.1 mm)
Weight	1.8lb(800g)