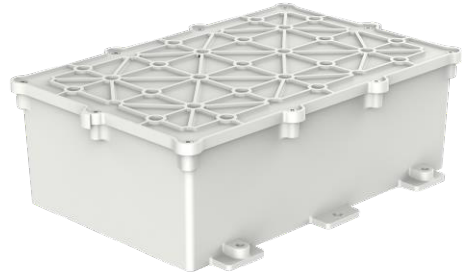


**LTA-SLB30**  
**Lithium Battery**

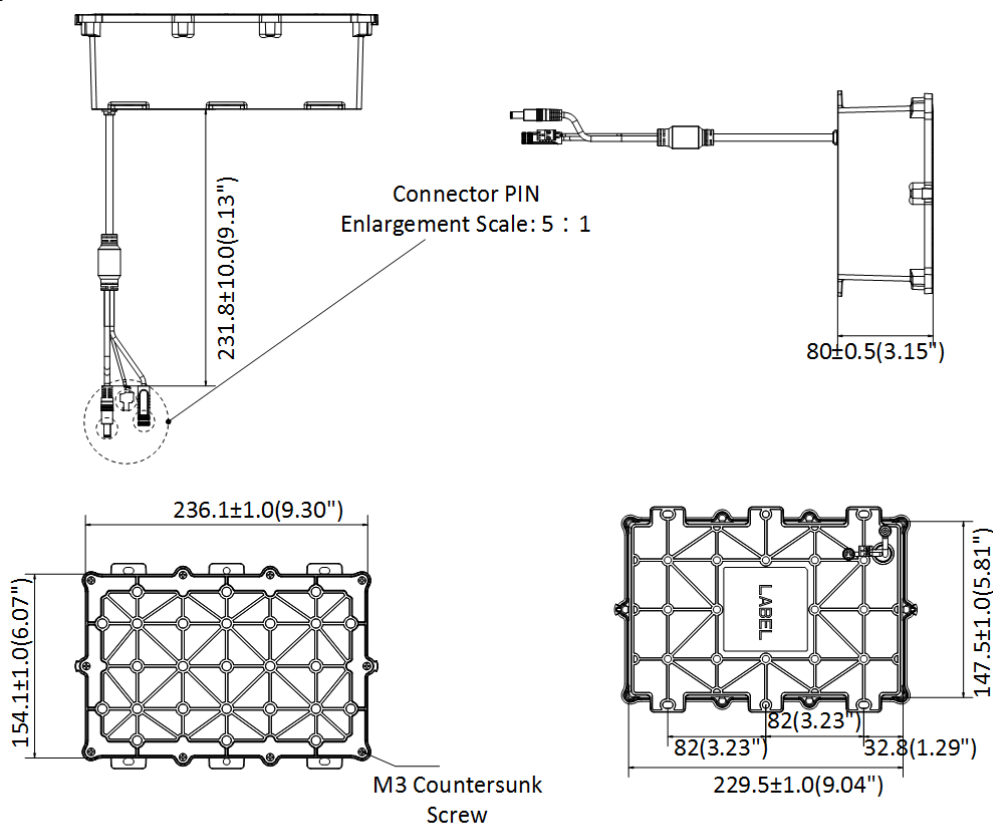


- 30 Ah chargeable lithium battery

## ▪ Specification

Parameters	
Dimension	Battery Dimension: 236 × 154 × 80 mm (9.29" × 6.06" × 3.15") Package Dimension: 280 × 170 × 218 mm (11.02" × 6.69" × 8.58")
Operating Conditions	Charging Condition: -20 °C to 45 °C (-4 °F to 113 °F) Discharging Condition: -20 °C to 60 °C (-4 °F to 140 °F)
Storage Conditions	-20 °C to 60 °C (-4 °F to 140 °F)
Battery Type	Lithium
Battery Voltage	10.8 V
Capacity	30 Ah
Max. Charging Voltage	12.6 V
Battery Life	More than 500 cycles
Weight	Approx. 3.3 kg (7.3 lb.)
Material	Housing: Aluminum Alloy
Protection	IP68 (1.5 m, 72 h)
Heater	Yes
Interface	1 RS-485 (half duplex), Ø5.5 mm coaxial power plug, M8 aviation plug
Solar Power Controller	MPPT solar power controller Fully charged voltage: 12.6 VDC Max. output current: 8 A

## ▪ Dimension



Unit: mm(inch)