

LTS Active Guard – Setup Guide (NVR Monitor)

***NOTICE** you must have NVR Firmware **V4.61 Build 230703** installed for this function to work correctly.

NVR Models Supported – LTN8608-P8 / LTN8616-P16, LTN8916H, LTN8916H-P16, LTN8932H, LTN8932H-P16, LTN8932H-P24, LTN8932-P16, LTN8932-R, LTN8964-8, LTN8964-R) **NVR FW -** [Download Link](#)

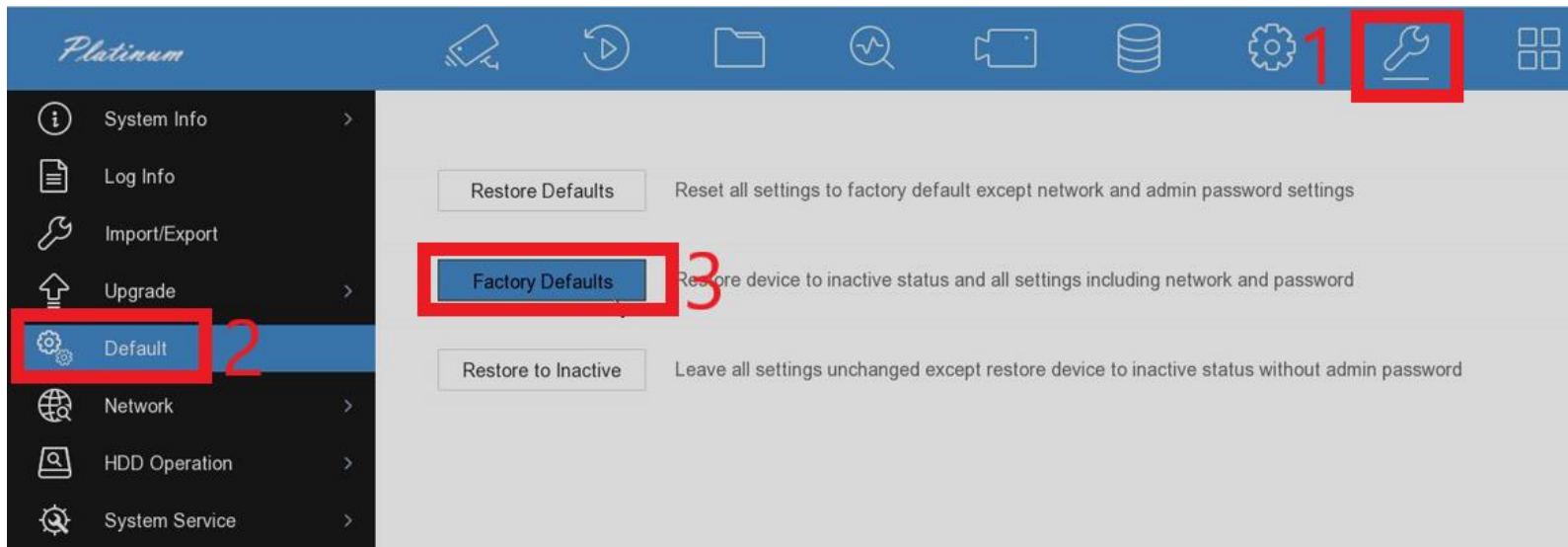
IP Camera Model:

CMIP3D82W-M28 G5 - **5.7.1 Build 230330** or above

CMIP3C8PW-SDL - **5.7.1 build 220902** or above

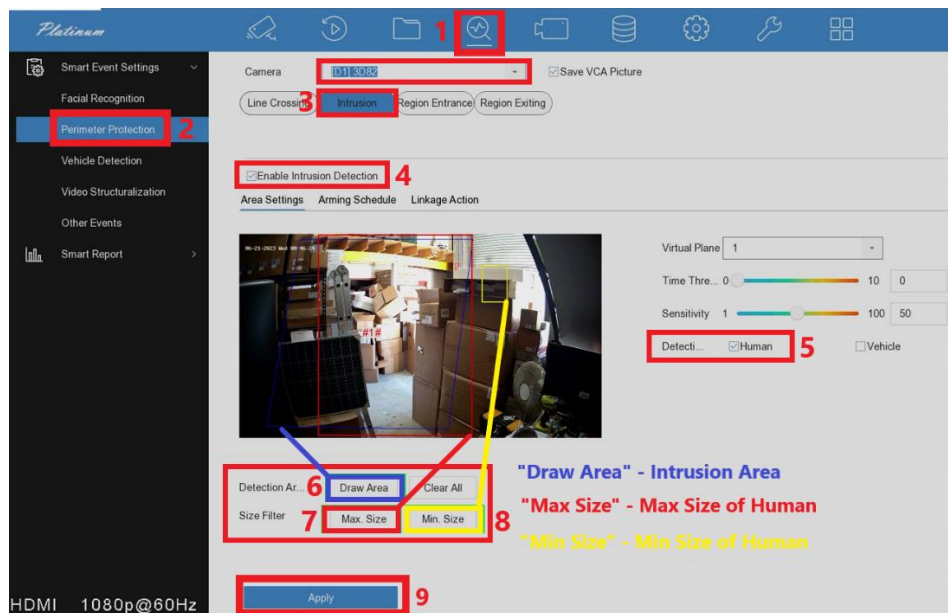
CMIP3C42W-28SDL - **V5.7.1 build 220506** or above

STEP 1: (NVR) – Upgrade NVR Firmware to V4.61 Build 230703

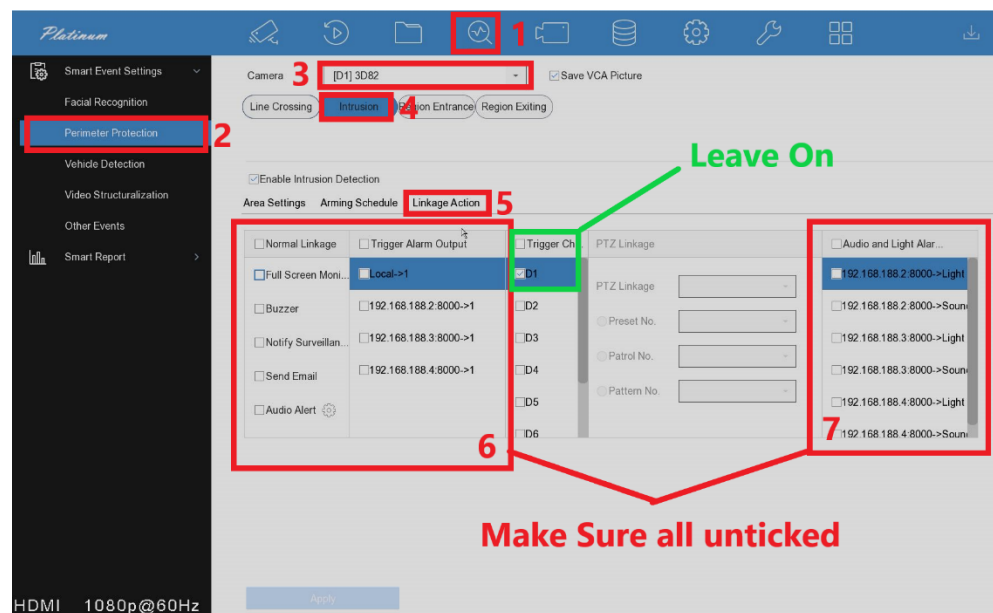


STEP 2: Configure IP Camera via NVR Monitor

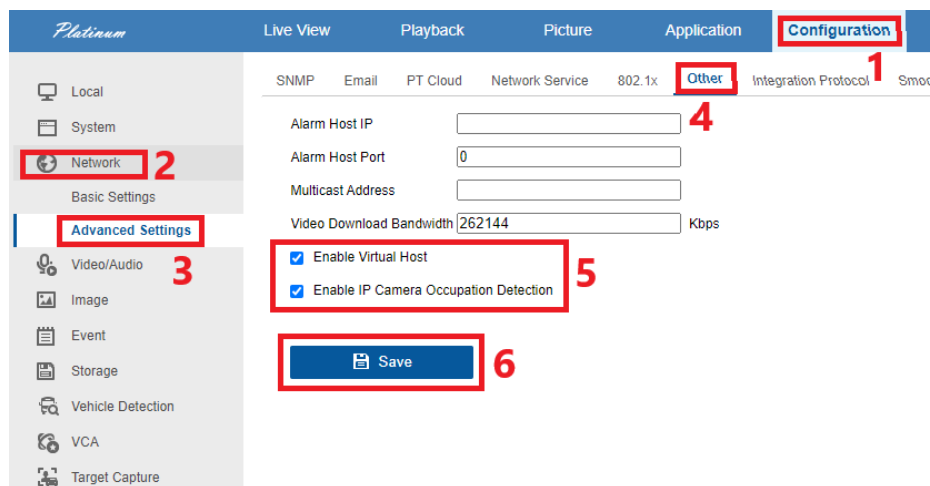
- Setup Intrusion



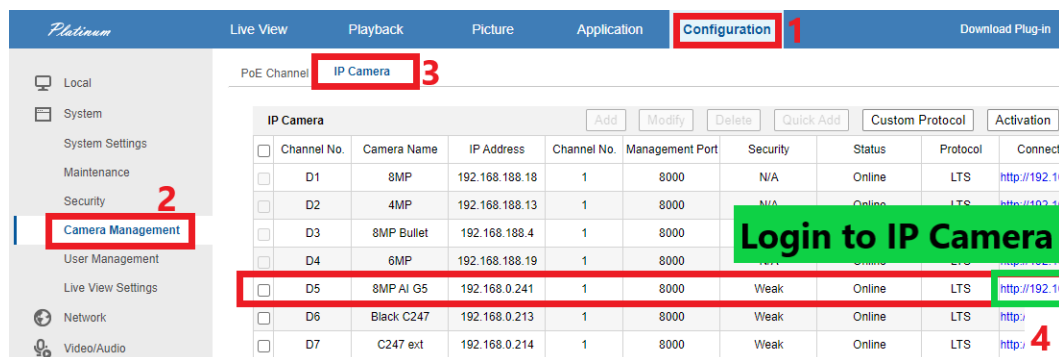
STEP 2a: Make sure Notify Surveillance Center & Audio / Light Alarm are disabled



STEP 3: Enable Virtual host (NVR) PC Login Web Browser



STEP 4: Login to IP Camera



STEP 5: Set Target Validity to "Highest" (IP Camera)

The screenshot shows the Platinum IP Camera configuration interface. The 'Configuration' tab is selected (1). In the left sidebar, 'Event' is selected (2), and 'Smart Event' is highlighted (3). The 'Intrusion Detection' sub-tab is active (4). A live video feed shows a room with red chairs and a yellow detection area (4). Below the feed, the 'Target Validity' is set to 'Highest' (5). A green box with the text 'Set Target Validity to "Highest"' is overlaid on the interface. The 'Save' button is highlighted (6).

Configuration 1

Scene Change Detection **Intrusion Detection** Line Crossing Detection Region Entrance Detection Region Exiting Detection

☒ Enable 4

Area Settings Arming Schedule Linkage Method

Region 1

Max. Size Min. Size Detection Area Clear

Target Detection ☒ Human ☐ Vehicle

Threshold(s) 0

Sensitivity 50

Target Validity Highest 5

Save 6

Set Target Validity to "Highest"

STEP 6: Set up event recording – if both Motion/Event record is required (NVR)

The screenshot shows the Platinum NVR configuration interface. The 'Configuration' tab is selected (1). In the left sidebar, 'Schedule Settings' is selected (2). The 'Record Schedule' sub-tab is active (4). The 'Camera' dropdown is set to '[ID5] 8MP AI G5' (3). The 'Event' dropdown is selected (4). The 'Record Schedule' table is shown (5). The 'Save' button is highlighted (6).

Configuration 1

Record Schedule Capture

Camera [ID5] 8MP AI G5 3

☒ Enable

Event 4 x Delete Delete All 5 Advanced

	0	2	4	6	8	10	12	14	16	18	20	22	24
Mon													
Tue													
Wed													
Thu													
Fri													
Sat													
Sun													

Copy to... Save 6

STEP 7: After Registering an account on LTS Connect APP:

On the NVR - Configuration -> Network -> Advanced Configuration -> PT Cloud

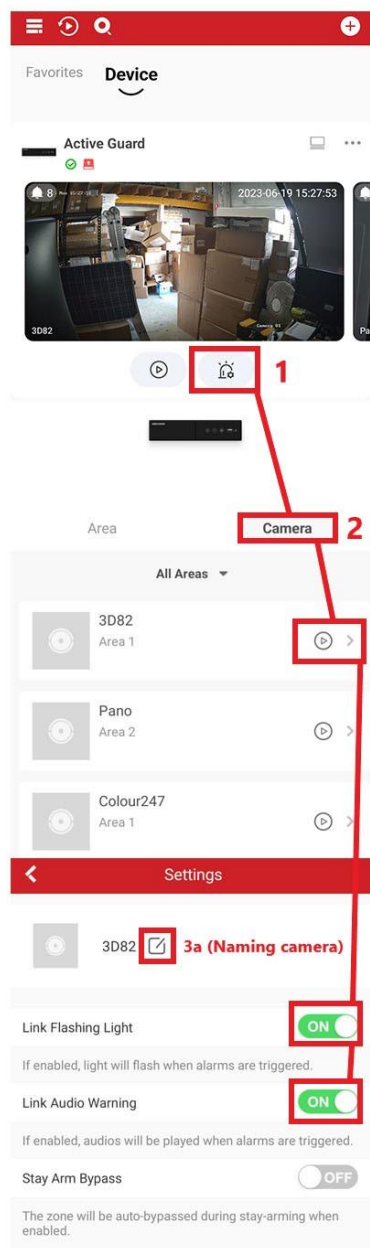
1. Enable PT Cloud
2. Scan the QR Code to register the NVR to your APP
3. Test to see cameras are online
(shut down & restart app if cameras come up offline)

STEP 8: Enabling Active Guard on LTS Connect

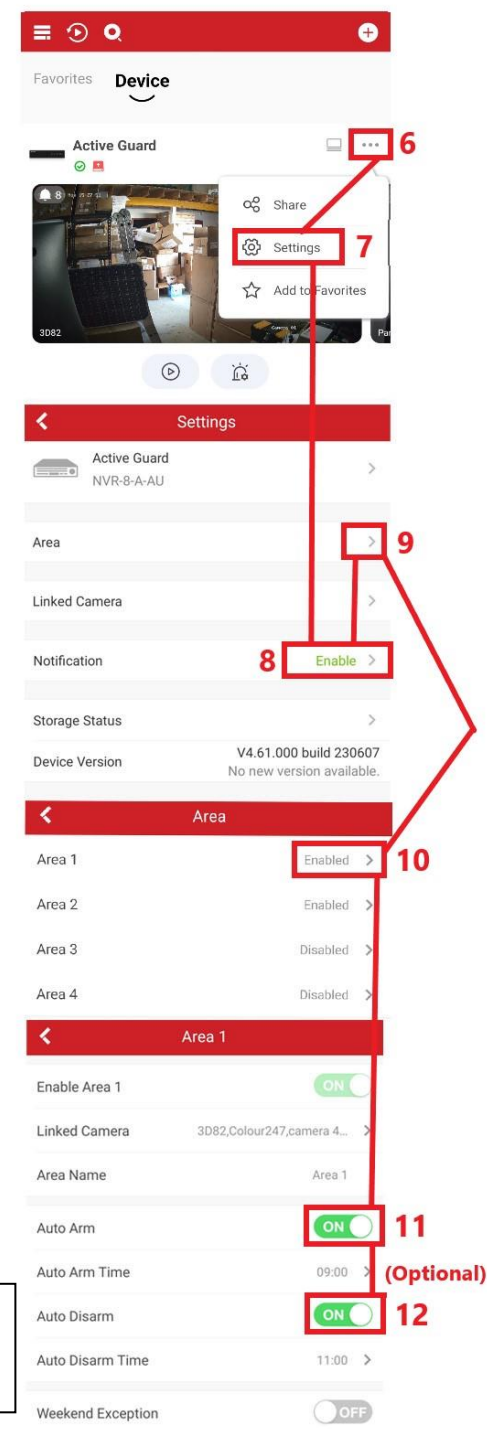


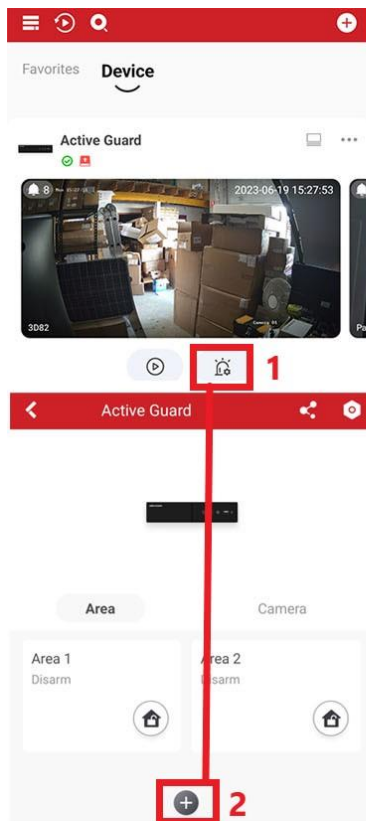
LTS Connect – Active Guard Setup

Activate Flashing Light &
Audio Warning in LTS
Connect.

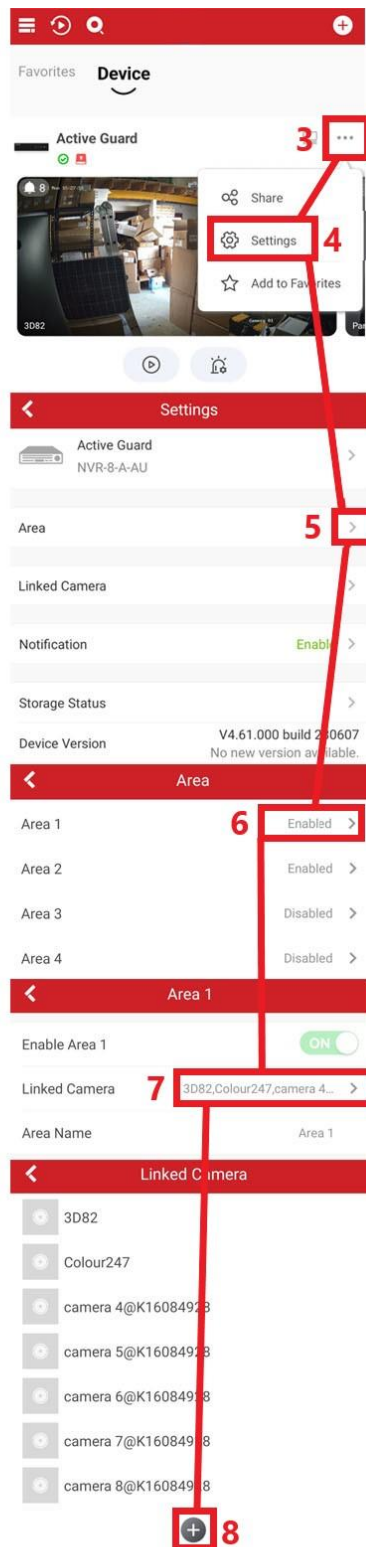


Enable Auto Arm/Disarm by
Schedule, will be enabled the
day after setup.





Setup additional Areas
(Different zones)



Area Setup

Adding Cameras to Different Areas (Zones) you can add specific cameras you want to activate separately. Such as "Rear Shed" Or "Front Entry" to isolate certain cameras and setup specific Arming & Disarming for those zones.