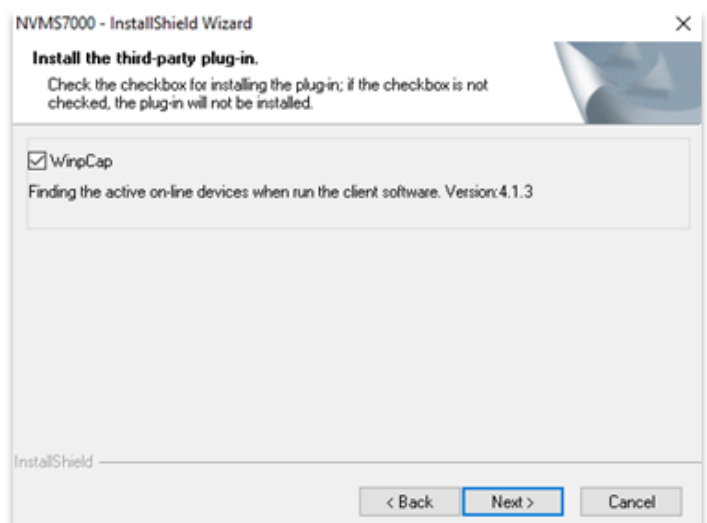
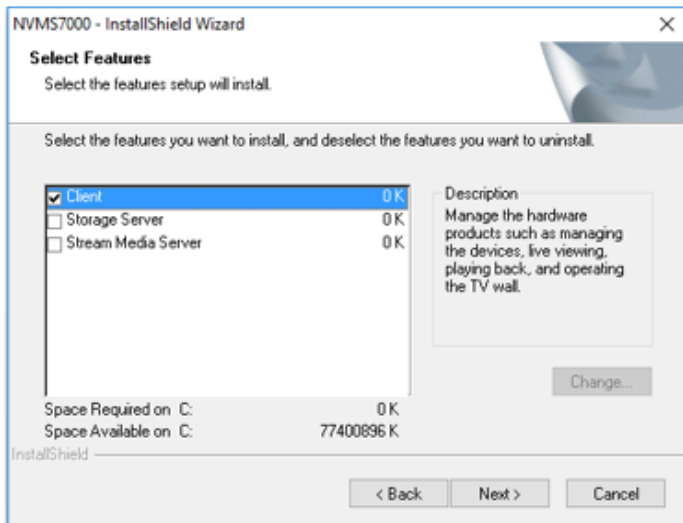


NVMS7000 LiveView, Playback & Backup

NVMS7000 (PC) Installation

(This KB is for the NVMS7000 Windows PC version Only)

Please download NVMS7000 from LTS website & install first. <http://www.ltsecurityinc.com/downloads>



Important Note:

Wincap is a requirement software. You must install it and select automatic run during the installation to make NVMS7000 work. If your PC cannot install it, go to their website and download the latest Wincap and install it first.

<http://www.wincap.org/install/default.htm>

First-time run...

Open NVMS 7000 software.

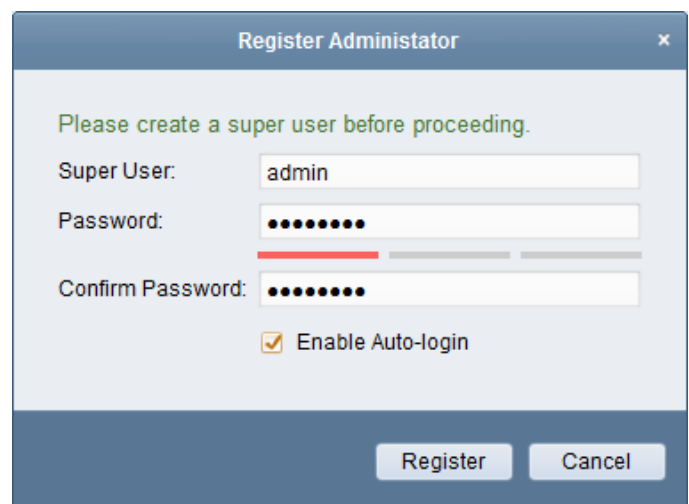
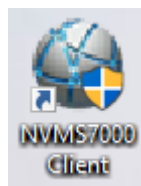
For the first time run, you need to create a password for this software.

Password rule requires 8 characters.

Mix with alphabet and numbers.

The color line indicates your password strength.

Recommend enable Auto-Login. Click **Register** to continue.



Wizard

Click Add Device to add your NVR Address.

Enter your NVR info here.

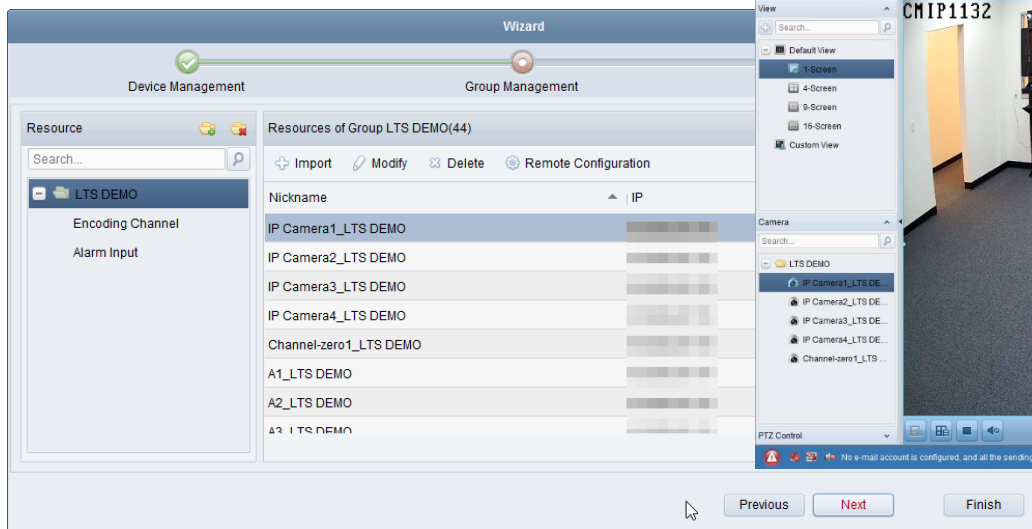
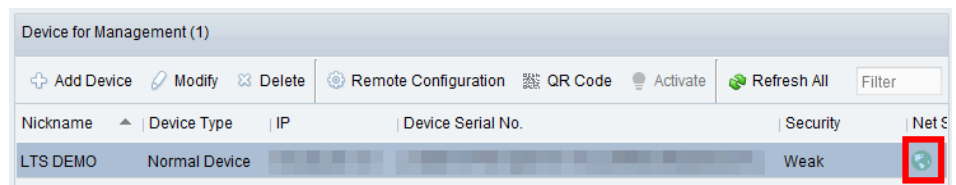
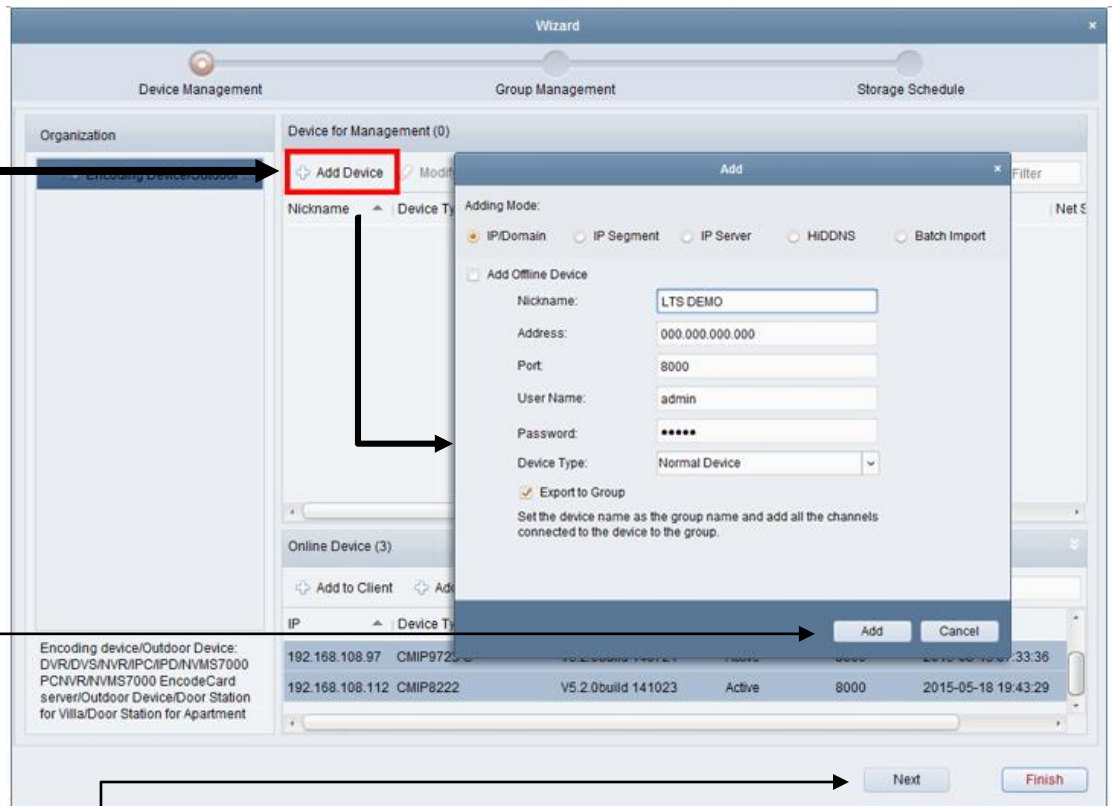
Address:
type IP / DVRLists address

Username and PW
It is the NVR username & password.

Click Add

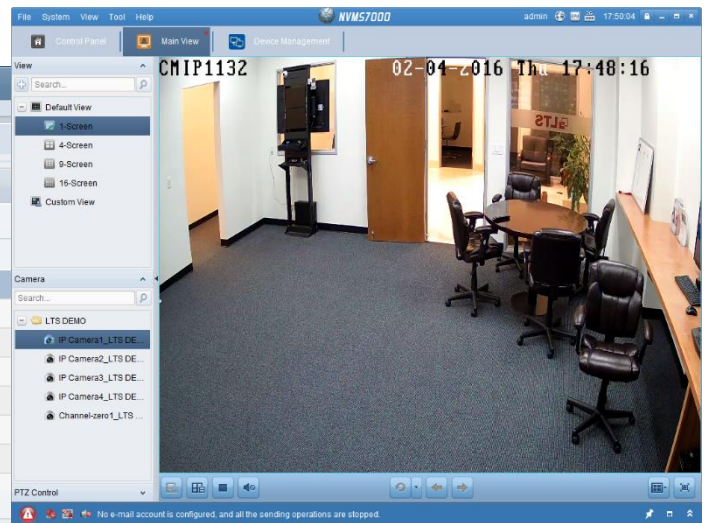
If it connects correctly, you should see your NVR serial no. and Green Earth icon.

click **Next** to continue.



click **Next** or **Finish** to continue.

Congratulation, you just finish the wizard and should be able to see the video.



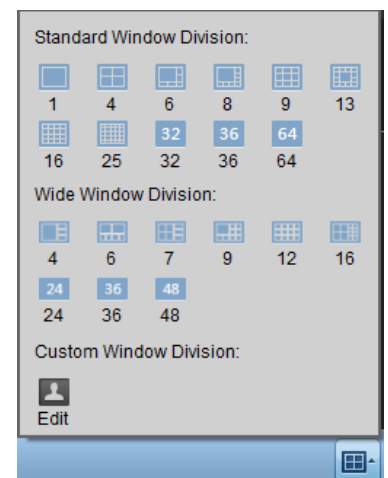
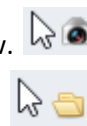
Main View Interface

I try to make this knowledge base useful and simple. For other optional detail functions, I recommend you to read the manual. The manual is located in the Help, or press F1.



How to display the LiveView?

1. Select Camera from the bottom left, drag and drop into the window. You also can drag and drop a "Folder" to the window, then it will display all camera at once.
2. To change display layout, please choose the bottom right icon.
3. Right click on the video, you should see more functions.



How to Create a Custom View? (See Appendix 1)

How to define different Server or Reduce the Camera#? (See Appendix 2)

Playback

Go to the Control Panel, click **Remote Playback** icon

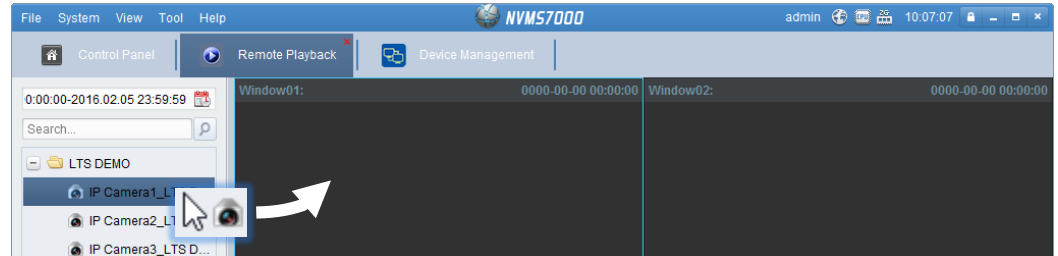


This is the Playback Window

1. **Drag & Drop Camera**



into the window.

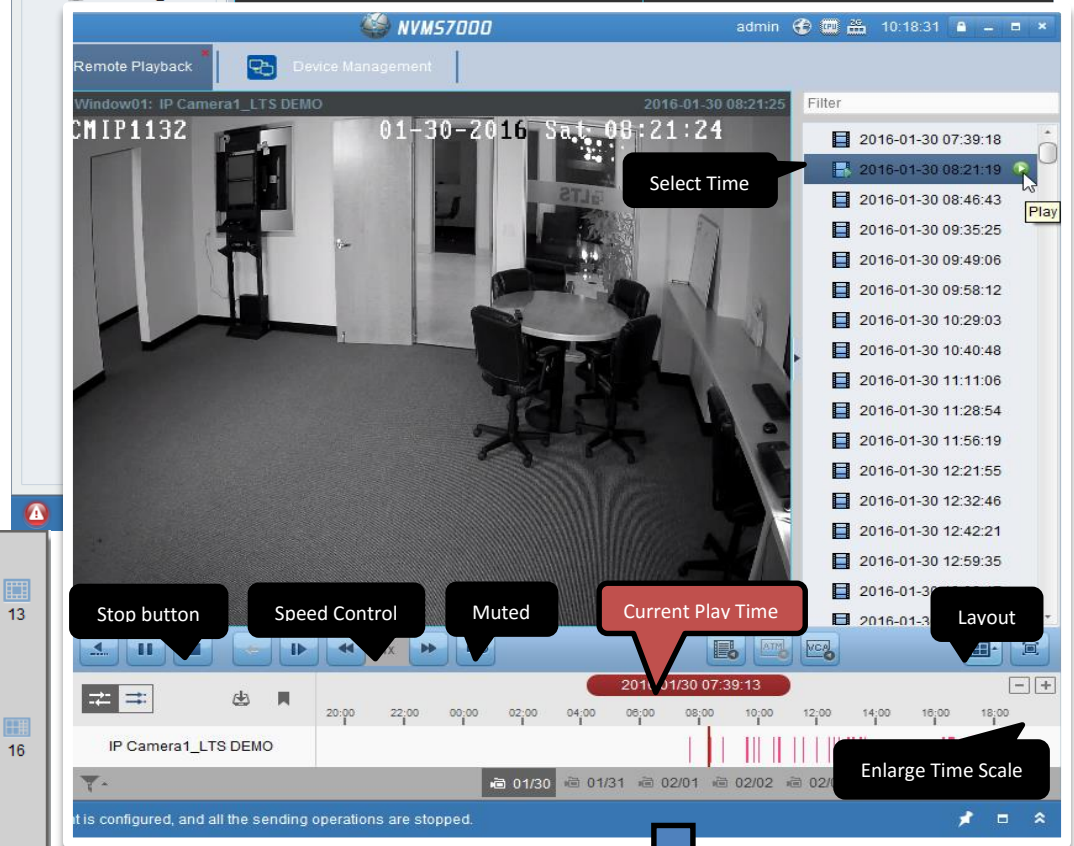
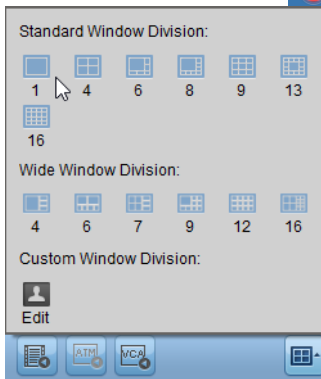


Then, NVMS7000 will try to retrieve video data from the NVR. (wait for a moment..)

Note)

try to reduce to minimal of the channel to improve the connection speed. More channel requires more network speed & bandwidth to run smoothly.

2. Change **layout** click here



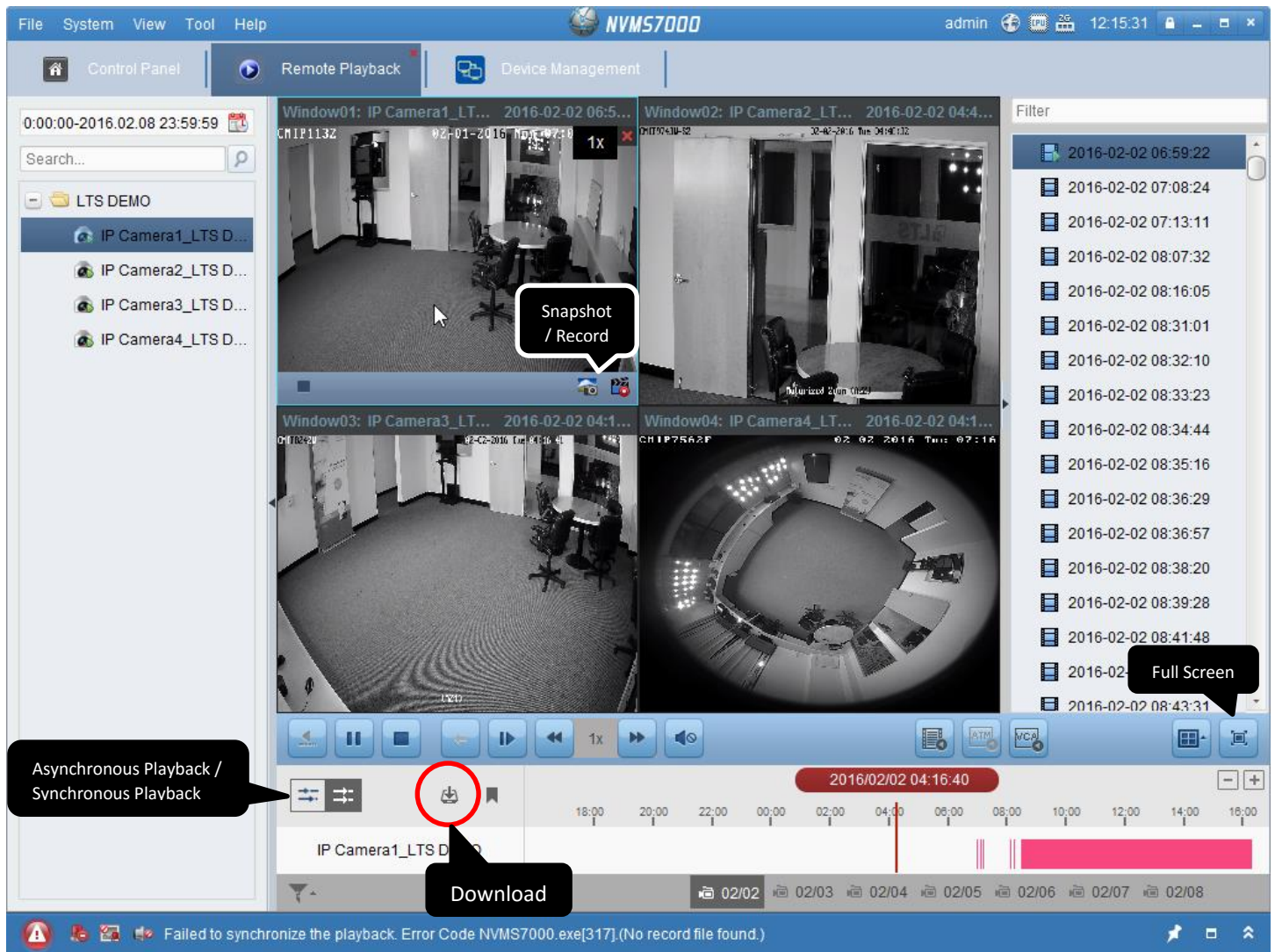
3. Select different **Date**



4. Select **Time**, Drag n Drop to a different time, or select time from the top.

5. Done.

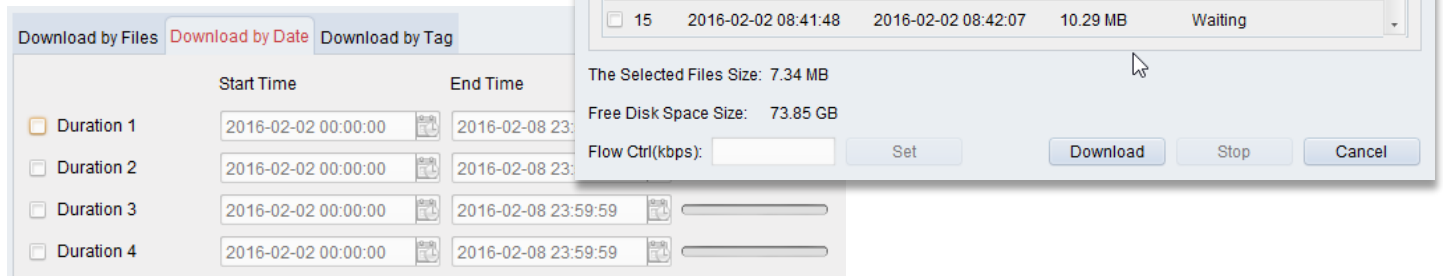
Playback Interface



Backup Video

1. Click the Backup button.
2. Select file, and lick Download

Or, you can specify date & Download.




Where is my download file?

When you finish the download, it pop up blue message. You can click it to access it.

OR, you can find out at C:/NVMS7000

How to change my default download location?

Go to **Control Panel** -> **System configuration** -> **File**



C:/NVMS7000/video/20160202/LTS DEMO IP Camera1 LTS DEMO_20160202071302_20160202071327_1633514.mp4

How to play the download file?

You can download the VSPlayer for Platinum DVR. Or, download the Codec file for Windows Media Player.

| | | |
|---------------------------------|-------------------------------------|--------------------------|
| Video Player for Platinum | Local storage of for playback video | Download |
| Platinum Codec for Media Player | For Platinum Series products | Download |



Knowledge Base

Text: Jimmy Wang

VSPlayer for Platinum DVR/NVR

We just got the new update for the VSPlayer.



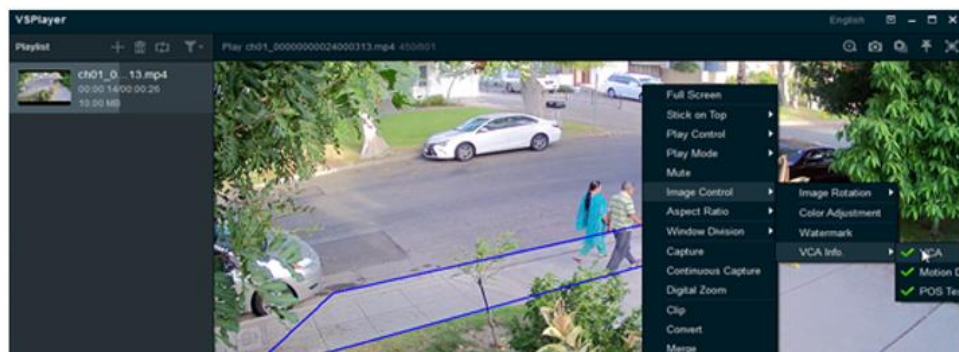
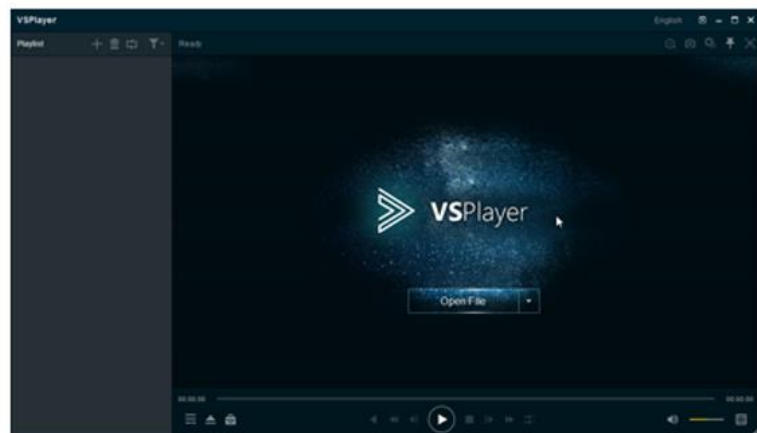
The new design player for Platinum DVR/NVR System looks nice and professional. It supports several new features which are the previous version doesn't have.

1. Image Control: Support POS txt overlay, support enable/disable VCA line/Motion line.
2. Support multiple layouts in the same player.
3. Support more convert video format.

Previously, we cannot disable VCA line, or the motion detects green block. Now we can.

Right click on the Video portion.

Go to Image control -> VCA Info, then the Green



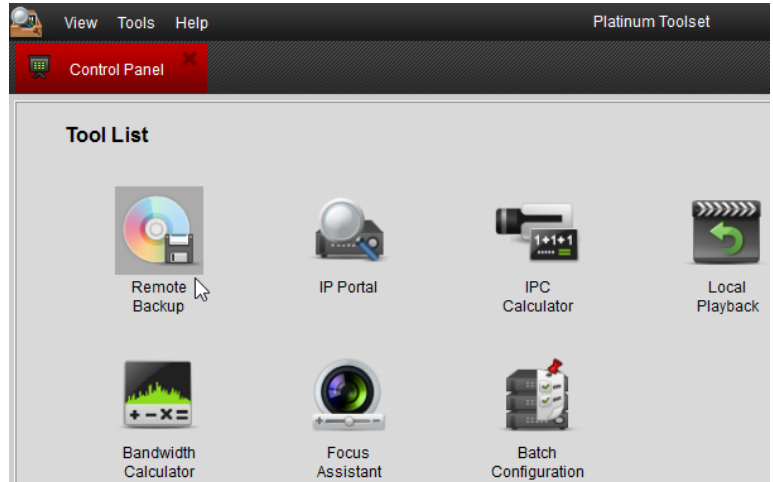
Reference: KB - VSPlayer

How to do Multiple Channel backup?

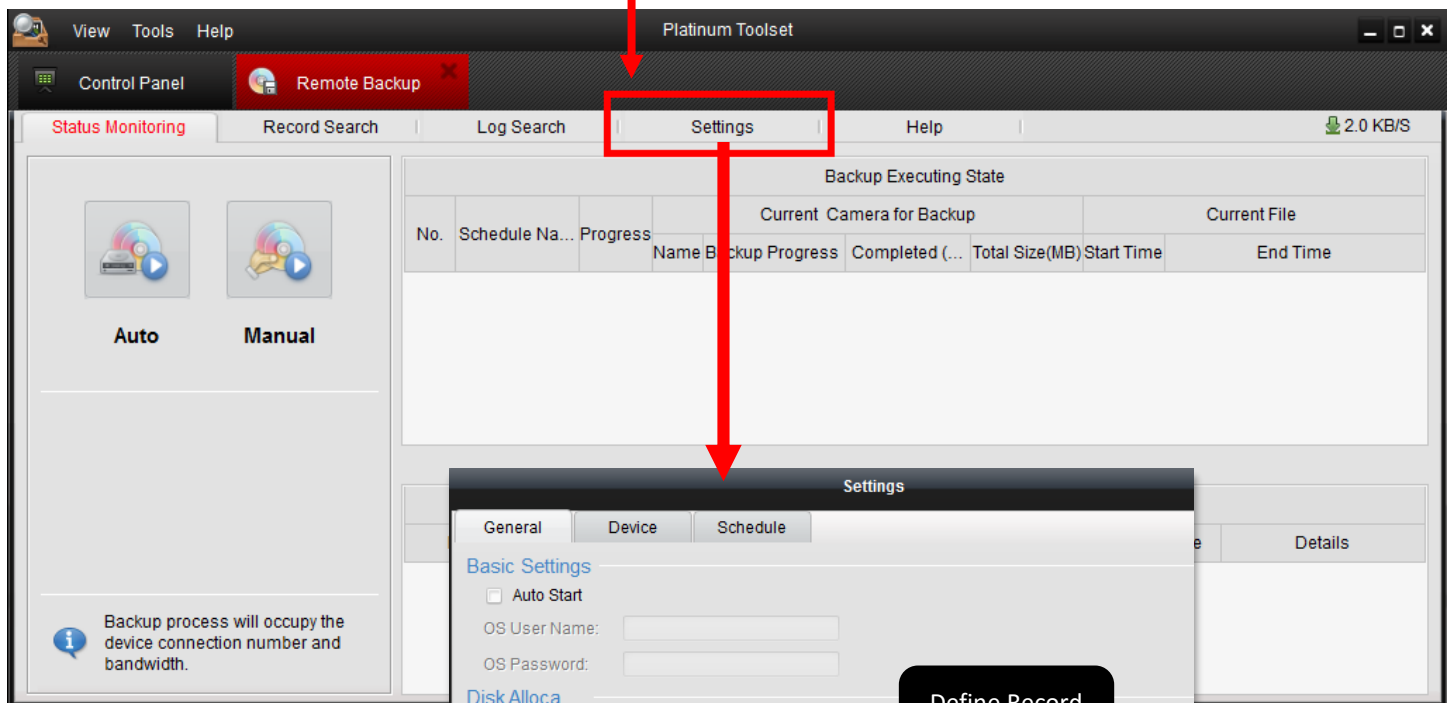
Q: OK, I understand click the backup button, you only can backup one channel.
What happen if I want to backup multiple channels?

A: You can use Platinum Toolset software to help.
Download this software from our website.
www.LTSecurityinc.com/Downloads
Platinum Toolset (V1.2.0.50)

After install and run it,
Run **Remote Backup**



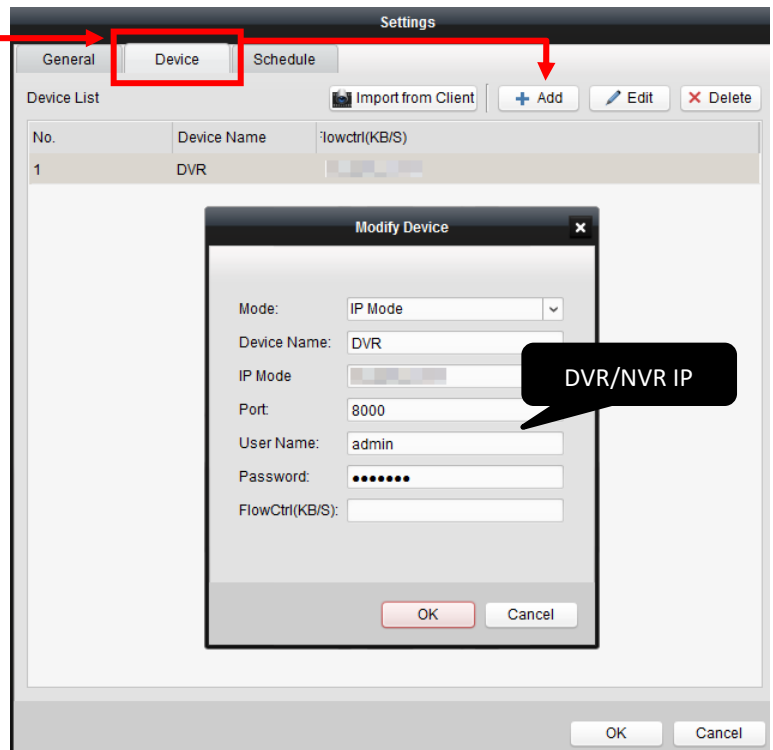
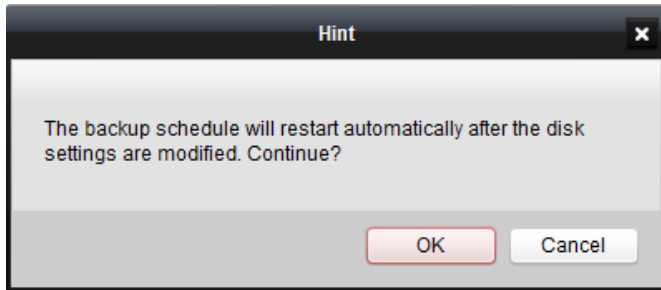
This is the Remote Backup looks like. Go to **Settings**



Go to General
Define the Record Location first.

How to do Multiple Channel Backup?

1. Go to General, select HDD location first.
2. Select **Device** at the top, click Add to assign DVR/NVR IP address. If you use DVRLists.com address, select domain mode.
3. If you want to define the Automatic Schedule backup, then click Schedule. Otherwise, click **OK** to finish.



Click OK again to continue.

4. Now, you back to the main screen.

Click **Manual Backup** to begin.

Select Camera first, you can select Multiple cameras by Ctrl + mouse click

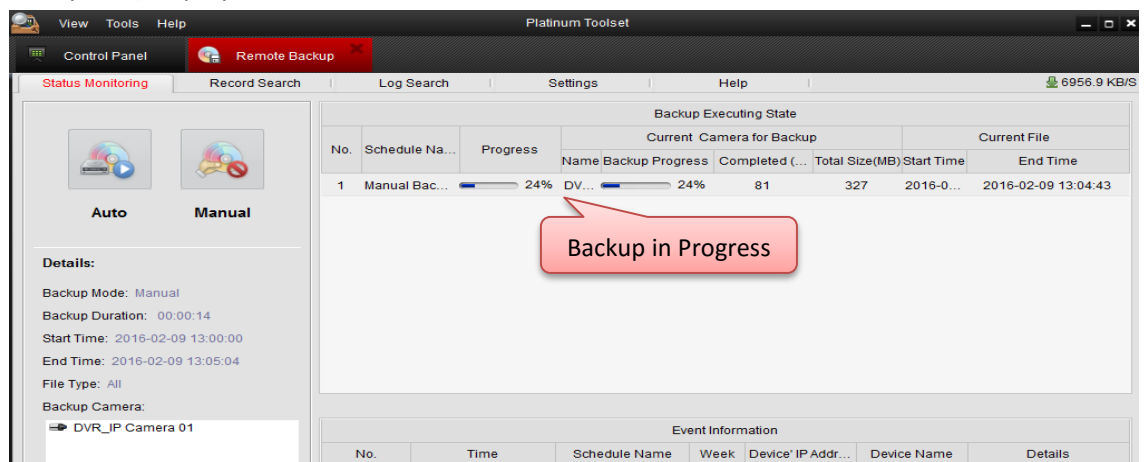
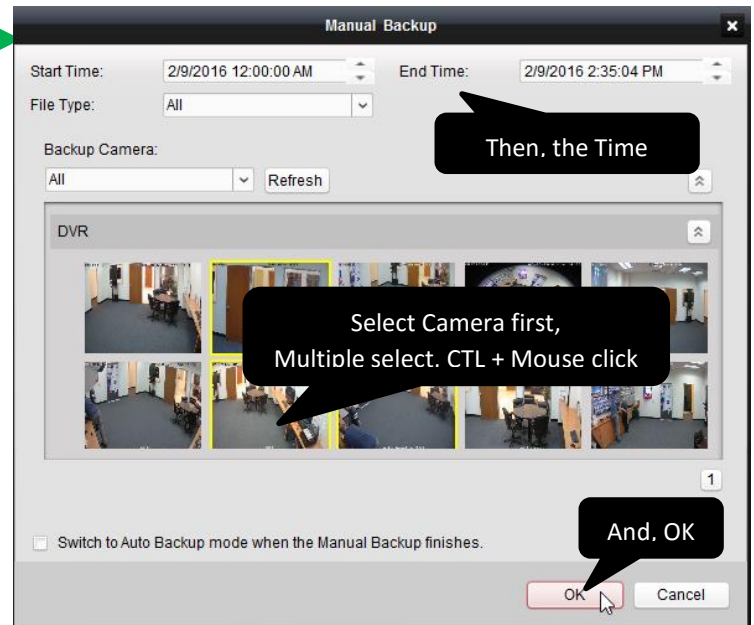
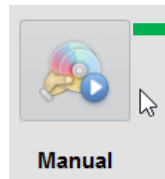
Define the backup time Begin and the End.

Click **OK** when to finish.

5. After you click OK, you should see it is backup now.

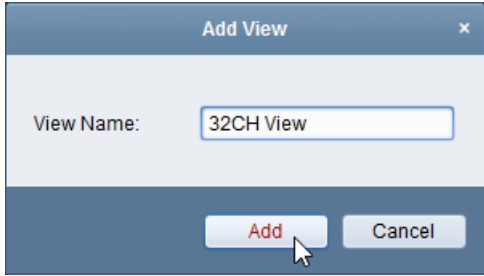
Done

Go to your HDD location, you should see a folder name **RecordFile**. Your video file is saved in there. You can use Platinum Toolset (Local Playback) to play it.

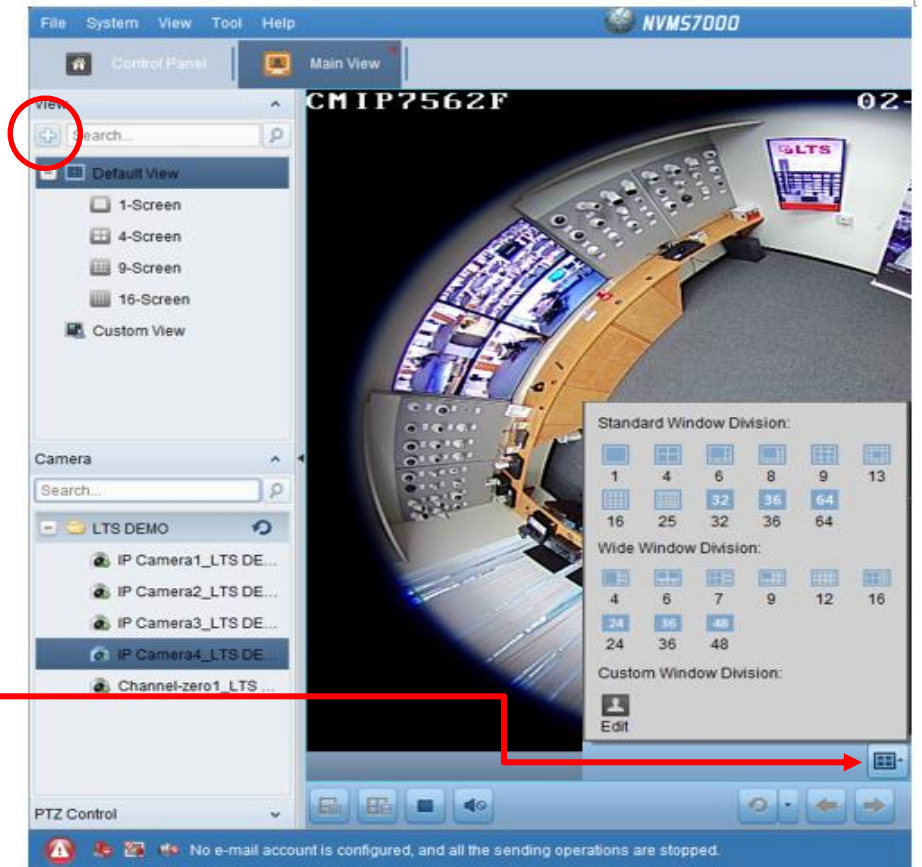


Appendix 1: Live View – Create Custom View


1. Click [+] to create a custom view
2. Create a Name



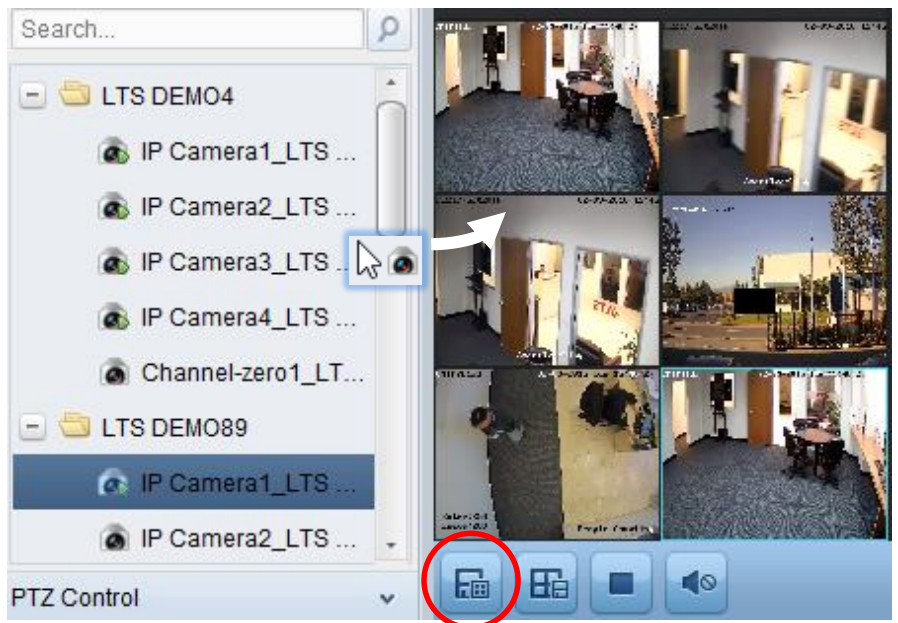
3. Then, select Layout to 32CH



4. **(Important)** Drag n Drop each camera into the window.

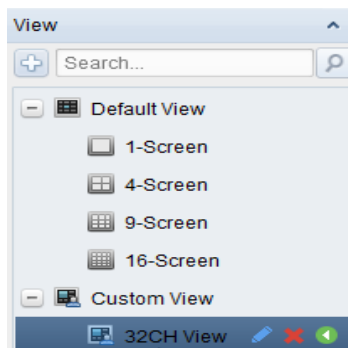
5. Click  **Save View** button to save the Custom View

6. **Congratulation, it is done.**



7. Then, if you double click the 32CH View, it will run all 32CH with the camera at

once.

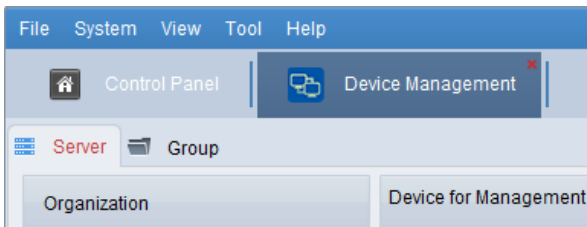


Appendix 2: Device Management - Server or Group, how does it work?

This is the Control Panel.

Go to **Tool -> Device Management**, or click the icon at the bottom

There are two major buttons – **Server** and **Group**



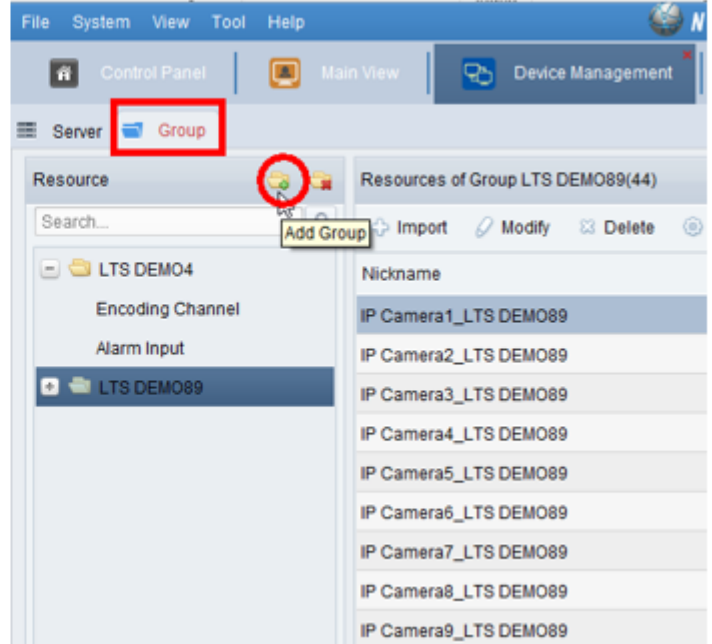
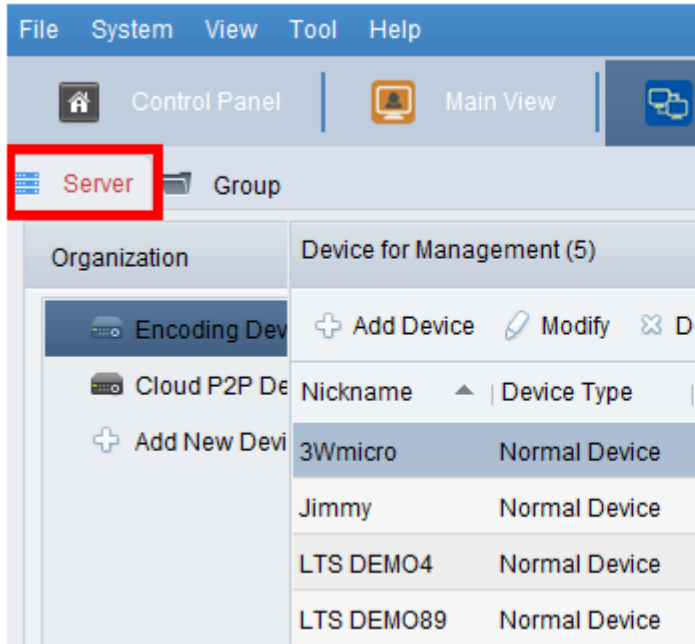
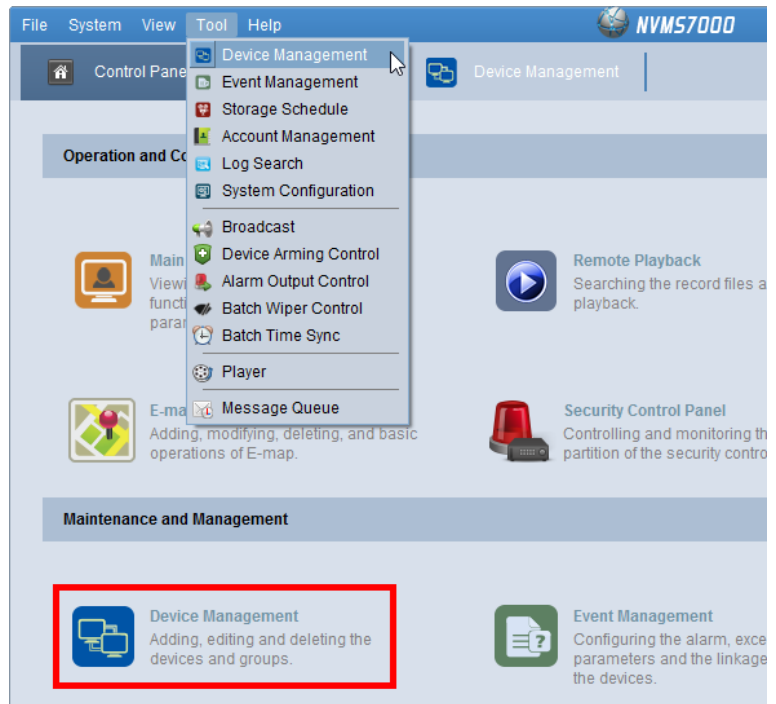
Server – it is the DVR/NVR or another setting

Click Add Device to add the DVR/NVR/IP Camera address. Make sure the Green Earth icon showing.

Note If it is not connected correctly, it will not create a video group.

Group – Define the Video Group.

You can reduce the unused channel number, or you can combine with different DVR/NVR location channel into one group. When you open it, you can view all at once.



Tips: In the video **Group**, you can define or redefine your camera number from there. You can select Import to add more, or highlight the camera from the list and delete it (press keyboard delete key) from the list. You can use this way to reduce your camera number to save more bandwidth.

Also, you can select multiple DVR/NVR camera and import it into one video group. When you open it, it will pull out at once.